



June 2025

Proudly serving the members of Albemarle Electric Membership Corporation

## Albemarle Sounds

is published monthly by

**Albemarle Electric  
Membership Corporation**

Your Touchstone Energy® Cooperative   
The power of human connections®

P.O. Box 69  
Hertford, NC 27944  
(252) 426-5735

**Kevin Heath**, General Manager  
**Chris Powell**, Editor

Website and member portal:  
**www.aemc.coop**

Outages:  
**1-800-274-2072**  
24-hour payments:  
**(252) 426-4419**

*Albemarle EMC is an equal  
opportunity provider and employer.*

## REPS Rider Charges Decrease

Effective July 1, the Renewable Energy Portfolio Standard rider charges will be as follows: The residential REPS rider will decrease from 69 cents to 52 cents. The commercial REPS rider will decrease from \$3.86 to \$2.90. The industrial rider will decrease from \$25.72 to \$19.36.

## Basketball Camp Scholarship Winners Announced

Two local students were recently selected to attend summer basketball camps at N.C. State University and the University of North Carolina, at Chapel Hill.

Perquimans Middle School student Shirley Augustine will attend the Wolfpack Women's Basketball Camp, and Northeast Academy of Aerospace and Advanced Technologies student John Peel will attend the Carolina Basketball School. The

students were selected based on the quality of their written essay, academic achievements and extra curricular activities.

The scholarships cover all expenses at the overnight camps, which provide a glimpse into life on a college campus. Campers stay in dorms, learn skills that will help them excel on and off the court and receive individual and group instruction from Division 1 coaches to enhance their basketball and team-building abilities.



*From left are: Coach Darius White, Assistant Principal Makesha Spivey, student Shirley Augustine, Coach Colbert Modlin, Principal Laura Moreland.*



*From left are: Principal Leah Lane, student John Peel and his father John Peel.*

## ACT Grants Awarded

Four Albemarle Community Trust grants were recently awarded to organizations that serve the region.

The Boys' and Girls' Club of the Albemarle received \$1,200 to help pay for summer field trips for the youth.

Albemarle Hopeline, Inc. received \$1,500 to assist victims of domestic violence.

The Belvidere-Chappell Hill Volunteer Fire Department received \$5,000 to help pay for a SuperVac 18-inch positive pressure fan. Fire departments use fans to rapidly clear smoke and heat from buildings, improving firefighter visibility and safety.

The Pasquotank Providence Volunteer

Fire Department received a \$2,000 grant to purchase an electric vehicle fire blanket and a nozzle to aid in safely extinguishing fires underneath electric vehicles.



*Pasquotank Providence Fire Department Chief Billy Lewis receives a \$2,000 grant to purchase equipment to fight electric vehicle fires.*

# Nominating Committee Appointed

At their May meeting, the Albemarle EMC Board of Directors appointed a nominating committee for the purpose of nominating a slate of candidates for this year's board of directors election.

Anyone wishing to be nominated to run for a seat on the Albemarle EMC Board of Directors has until early July to inform the co-op of their intention. Qualifying members who wish to be considered for nomination should notify Public Relations Director Chris Powell by email ([chris.powell@aemc.coop](mailto:chris.powell@aemc.coop)) or by addressing a letter

to Chris Powell, Albemarle EMC, P.O. Box 69, Hertford, NC 27944. The prospective nominees will be given the names and addresses of the nominating committee members they will need to contact. The nominating committee will meet in mid to late July.

Up for election this year are board of directors seats for Chowan, Perquimans and Camden counties. The co-op's Annual Meeting will be held on Saturday, Sept. 20 at the Perquimans County Recreation Department, located at 310 Granby St., Hertford.

## Bylaws Relevant to Nomination of Directors

### Section 4.03 Directorate Districts

Directors shall be nominated and elected in a manner such that the board shall be comprised of two directors from each of the four directorate districts, designated one (1) through four (4) inclusive and one director from directorate district number five (5) as follows:

### Section 4.04 Qualifications

To become or remain a director, a person must comply with or meet the following:

- (a.) Have the capacity to enter legally binding contracts;
- (b.) Be a member of the cooperative;
- (c.) Reside principally in the directorate district from which a director is to be chosen, and continuously and materially use, receive, or purchase electric energy from the cooperative at the member's primary residence;
- (d.) Possess a valid high school diploma or equivalent certification; and
- (e.) Must not have been convicted of a felony, a crime involving moral turpitude, or commission of embezzlement, theft, forgery, bribery, falsification or destruction of records, making false statements, or receiving stolen property.

A member shall be disqualified from being or remaining a director, as a result of a conflict of interest, if:

- (a.) The member is a current, former, or retired employee currently receiving any benefit from an electric supplier or is the spouse of a current, former, or retired employee currently receiving any benefit from an electric supplier; provided, however, a former employee who is not a retiree currently receiving any benefit from the cooperative and has not worked for the cooperative

within seven (7) years of the date of the relevant director election or selection is not disqualified;

- (b.) The member is a close relative of a current director or of an employee of an electric supplier;
- (c.) The member is employed by, materially affiliated with, or shares a material financial interest with any other director;
- (d.) The member is or has been employed by, materially affiliated with, or has a material financial interest in any individual or entity which regularly, directly or substantially competes with the cooperative or its subsidiary or affiliates, including investor-owned utilities or municipalities providing similar services provided by the cooperative, unless the person has not been so employed or affiliated with the individual or entity for a period of at least seven (7) years from the date of the director election or selection;
- (e.) The member is employed by, materially affiliated with, or has a material financial interest in any individual or entity which regularly sells goods or services to the cooperative or any cooperative subsidiary or affiliate; and
- (f.) The member seeks or applies for employment with the cooperative. Any director seeking to be employed by the cooperative must submit his or her board resignation prior to such time as he or she submits an application for employment or otherwise solicits the cooperative for such employment.

If it is determined that any person being considered for or currently holding a position on the cooperative's board of directors lacks eligibility under this Section, it shall be the duty of the board of directors to withhold such position from such person, or to cause him/her to be removed therefrom, whichever be the case. Nothing in this section contained

shall, or shall be construed to, affect in any manner whatsoever the validity of any action taken at any meeting of the board of directors, unless such action is taken with respect to a matter which is affected by the provisions of this section and in which one or more of the disqualified directors has an interest adverse to that of the cooperative.

### Section 4.05 Nominating Committee

The board of directors shall appoint, not less than sixty (60) nor more than one hundred and thirty (130) days before the date of the meeting of the Members at which directors are to be elected, a nominating committee consisting of an uneven number of members of the cooperative, not less than five (5) nor more than eleven (11), who are not current directors and who are not close relatives or members of the same household of current directors or known candidates. In selecting the committee, the board shall have regard for equitable representation of the five (5) directorate districts of the cooperative.

At least thirty (30) days before the annual member meeting, the committee shall meet and prepare and post at the principal office of the cooperative, a list of nominees for directorate districts to be elected, listing separately the nominee or nominees with respect to each directorate district for which a director must, pursuant to this article, be elected at the meeting. The committee shall include at least one (1) nominee for each directorate district for which a director is to be elected, including their name, address, and directorate district of residency. The committee's posted list shall also clearly show which nominees are opposed with respect to the same directorate district.





# Albemarle EMC is at Your Service



## Simple Ways to Reduce Power Usage

by Chris Powell, director of public relations

Reducing your power usage doesn't have to be a laborious process. Often, it's the simple, cheap changes that have some of the most meaningful impacts. For example, you can change the rate you are on and noticeably reduce your power bill. Albemarle EMC's time of day rate empowers members to, effectively, lower their cost of electricity by determining when they use electricity. The majority of Albemarle EMC's members are on the residential rate, meaning they pay 12.69 cents per kilowatt hour (kWh) regardless of when the electricity is used. However, the cost of electricity under the residential time of day rate during off peak hours, when demand for electricity is low, is 8.67 cents per kWh and 28.6 cents per kWh when on peak demand for electricity is high.

Depending on the time of day as well as the time of year, the cost of electricity that Albemarle EMC purchases to resell to its members rises and falls. That price difference is due to demand. During the day when most members are at work, the load is constant and can easily be met with base-load generation such as nuclear power. Nuclear power plants are great at generating steady, reliable power; however, they can't be ramped up quickly to meet a spike in demand. A peak in demand occurs when a majority of members all require electricity at the same time. For example, when everyone gets home from work and begins cooking a peak in demand happens. That peak is met through the use of electricity generating plants designed specifically to be able to generate a large amount of electricity in a short period of time. Peaking plants are often gas-fired turbine plants that can quickly generate. This extra generation, of course, costs more.

From midnight April 16 to midnight October 15, on-peak hours (when electricity costs 28.6 cents per kWh) is from 2 p.m. to 7 p.m. Monday through Friday, excluding designated holidays. The off-peak hours (when electricity is 8.67 cents per kWh) are all other times.

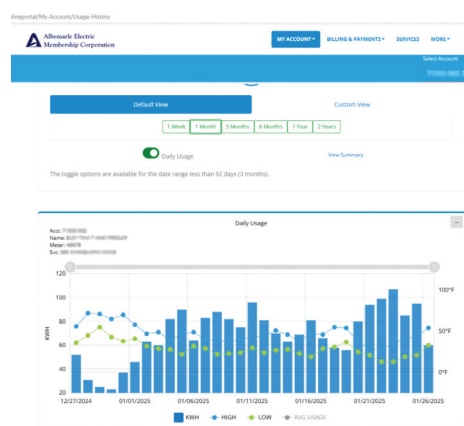
From midnight October 15 to midnight April 16, on-peak hours are from 6 a.m. to 10 a.m. Monday through Friday, excluding major holidays. Off-peak hours are all other times.

The designated holidays mentioned above are New Year's Day, Good Friday, Memorial Day, Independence Day, Labor Day, Thanksgiving day and Christmas day.

As you can see, the on-peak times are only four or five hours of a weekday. The rest of the day is off-peak, providing ample time to accomplish tasks such as cooking and showering when electricity is the cheapest. In addition, weekends and most major holidays are all at the lowest rate. With a little diligence, significant savings could be realized.

### Member Portal

Albemarle EMC's member portal (found at [www.aemc.coop](http://www.aemc.coop)) enables you to have more control over your electricity usage. One key feature is the power-usage graphs, which show members' consumption on a daily or monthly basis. By visiting this page, you can quickly determine the time of day that you are using the most electricity. Another handy feature are the alerts that can be set up. Members can easily have our system automatically alert them when electricity usage exceeds the amount you determine. Alerts can be sent by text or email. These alerts especially come in handy when heat pumps fail or there is a leak on the hot water side of your plumbing. Heat



*Albemarle EMC members have access to considerable power-usage information, which includes weekly, monthly and yearly graphs, such as the one shown above.*

pumps both heat and cool your home. Heat pumps sometimes malfunction by running the heat strips in tandem with the air conditioner. When this happens, electricity usage is very high, and it may not be apparent to the homeowner until they get their next power bill. However, if that same homeowner had set up a power-usage alert, they would have known immediately that something was wrong and have the problem fixed.

Surprisingly, alerts can make you aware of a plumbing leak, if the leak occurs on the hot water side of the plumbing. A leak on the hot water side of plumbing allows cold water to constantly flow into the water heater, which causes the water heater to remain on. When this occurs, usage will remain consistently high until the leak is fixed.

By using the time of day rate and taking advantage of our power monitoring capabilities, members can lower their power usage with just a small investment of time and, best of all, no investment of money.